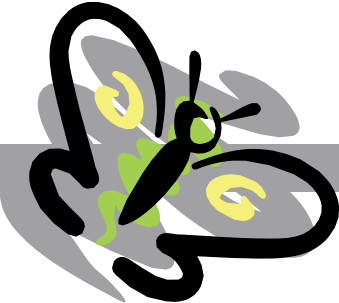


References







## REFERENCES

- American Speech-Language-Hearing Association (ASHA). (1995). Position statement and guidelines for acoustics in educational settings. *ASHA*, 37(14), 15-19.
- Alexander, K.L., & Entwisle, D.R. (1998). Achievement in the first 2 years of school. Monograph of the Society for Research in Child Development, 53(2).
- Barnett, W.S. (1995). Long-term effects of early childhood programs on cognitive and school outcomes. *The Future of Children: Long-Term Outcomes of Early Childhood Programs*, 5(3): pp. 25-50.
- Bell, A. C., & Dymont, J. E. (2006). Grounds for action: Promoting physical activity through school ground greening in Canada. Toronto, Ontario: Evergreen.
- Bhatnagar, S.C. (2002). *Neuroscience for the Study of Communicative Disorders*. Philadelphia: Lippincott-Williams & Wilkins.
- Bowlby, J. (1982). *Attachment and loss: Vol. 1. Attachment*. London: Hogarth.
- Bredenkamp, S., & Copple, C. (1997). *Developmentally appropriate practice in early childhood programs (Rev. ed.)*. Washington, DC: National Association for the Education of Young Children.
- Burchinal, M., Roberts, J., Nabo, L. & Bryant, D. (1996). Quality of center child care and infant cognitive and language development. *Child Development* 67(2), 606-620.
- Buysse, V., Sparkman, K., & Wesley, P. (2003). Connecting what we know with what we do. *Exceptional Children*, 69(3), 263-277.
- Buysse, V., & Wesley, P. W. (Eds.). (2006). *Evidence-based practice in the early childhood field*. Washington, DC: ZERO TO THREE Press.
- Buysse, V., Wesley, P. W., & Able-Boone, H. (2001). Innovations in professional development: Creating communities of practice to support inclusion. In M.J. Guralnick (Ed.), *Early childhood inclusion: Focus on change* (pp. 179 – 200). Baltimore, MD: Paul H. Brookes.
- Campbell, F. A., Ramey, C. T., Pungello, E. P., Sparling, J., & Miller-Johnson, S. (2002). Early childhood education: Young adult outcomes from the Abecedarian Project. *Applied Developmental Science*, 6, 42-57.
- Case, R., & Okamoto, Y. (1996). The role of central conceptual structures in the development of children's thought. Monograph of the Society for Research in Child Development, 51(2).
- Chermak G.D., & Musiek, F.E. (1997). *Central auditory processing disorders: New perspectives*. San Diego: Singular Publishing Group.
- Clifford, R., Early, D. M., & Hills, T. (1999). Almost a million children in school before kindergarten. *Young Children*, 54(5), 48-51.
- Cohn, D. A. (1990). Child-mother attachment of six-year-olds and social competence at school. *Child Development*, 61, 152-162.
- The Collaborative for High Performance Schools. (2006). *High performance schools best practices manual (2006 Edition)*. Online: [www.chps.net](http://www.chps.net)
- Cost, Quality and Child Outcomes Study Team. (1995). *Cost, quality, and child outcomes in child care centers: Public report*. Denver, CO: University of Colorado.
- Crandell, C.C. (1996). Effects of Sound Field FM Amplification on the Speech Perception of ESL Children. *Educational Audiology Monograph*, 4, 1-5.
- Cunningham, W. C., & Cordeiro, P. A. (2000). *Educational administration: A problem based approach*. New York: Allyn & Bacon.
- De Bord, K., Hestenes, L., Moore, R., Cosco, N., & McGinnis, J. (2005). *Preschool Outdoor Environments Measurement Scale (POEMS)*. Lewisville, NC: Kaplan Early Learning Company.
- Dyson, A.H., & Genishi, C. (1993). Visions of children as language users: Language and language education in early childhood. In B. Spodek (Ed.), *Handbook of research on the education of young children*, (pp. 122-36). New York: McMillan.
- Eberhard, J. (2007). *Architecture and the brain: a New knowledge base from neuroscience*. Atlanta, GA: Greenway.
- Edwards, C., Gandini, L., & Forman, G. (1998). Introduction: Background and starting points. In C. Edwards, L. Gandini, & G. Forman (Eds.), *The hundred languages of children: The Reggio Emilia approach – advanced reflections (2nd ed., pp. 5-25)*. Greenwich, CT: Ablex Publishing Company.
- Erikson, E. (1963). *Childhood and society*. New York: Norton.
- Flexer, C., Biley, K.K., Hinkley, A., Harkema, C., & Holcomb, J. (2002). Using sound-field systems to teach phonemic awareness to pre-schoolers. *The Hearing Journal*, 55(3), 38-44.
- Gallahue, D. (1993). Motor development and movement skill acquisition in early childhood education. In B. Spodek (Ed.), *Handbook of research on the education of young children*, (pp. 24-41). New York: McMillan.

- García, E. E. (2005). *Teaching and learning in two languages: Bilingualism and schooling in the United States*. New York, NY: Teachers College Press.
- Gilliam, W. S. (2005). *Prekindergarteners left behind: Expulsion rate in state prekindergarten systems*. New Haven, CT: Yale University Child Study Center. [On-line] Available: [www.fcd-us.org/PDFs/NationalPreKExpulsionPaper03.02\\_new.pdf](http://www.fcd-us.org/PDFs/NationalPreKExpulsionPaper03.02_new.pdf).
- Grossman, K.E., Grossman, K., & Zimmerman, P. (1999). A wider view of attachment and exploration. In J. Cassidy & P.R. Shaver (Eds.), *Handbook of attachment theory and research*. New York: Guilford (pp. 760-786).
- Hathaway, W., Hargreaves, J., Thompson, G., & Novitsky, D. (1992). *A study into the effects of light on children of elementary school age: A case of daylight robbery*. Edmonton, AB: Alberta Department of Education.
- Heschong Mahone Group. (1999). *Skylighting and retail sales: An Investigation into the relationship between daylighting and human performance*. Fair Oaks, CA: Pacific Gas and Electric. Retrieved on March 13, 2007 from <http://www.h-m-g.com/downloads/Daylighting/retailc.pdf>
- Howes, C., Smith, E., & Gallinsky, E. (1995). *The Florida childcare quality improvement study: Interim report*. New York, NY: Teachers College Press.
- Journal of Early Intervention. (2006). Guidelines for authors. *Journal of Early Intervention*, 28(4).
- Kagan, S. L., & Neuman, M. J. (1998). Lessons from three decades of transition research. *The Elementary School Journal*, 98(4), 365-379.
- Kats, G. (2006, October). *Greening America's schools: Cost and benefits*. Online: [http://www.buildgreenschools.org/documents/pub\\_Greening\\_Americas\\_Schools.pdf](http://www.buildgreenschools.org/documents/pub_Greening_Americas_Schools.pdf)
- Kauerz, K. (2006, January). *Ladders of learning: Fighting fade-out by advancing PK-3 alignment (Issue Brief No. 2)*. Washington, DC: New America Foundation.
- Retrieved November 29, 2007 from: [http://www.newamerica.net/files/archive/Doc\\_File\\_2826\\_1.pdf](http://www.newamerica.net/files/archive/Doc_File_2826_1.pdf)
- Kennedy, M. (2002). *Skylights*. American School and University. Online: <http://asumag.com/>
- Lee, J., Grigg, W., & Dion, G. (2007). *The Nation's Report Card: Mathematics 2007 (NCES 2007-494)*. Washington, DC: National Center for Education Statistics, Institute of Education Sciences, U.S. Department of Education.
- Lee, J., Grigg, W. S., & Donahue, P. L. (2007). *The Nation's Report Card: Reading 2007 (NCES 2007-496)*. Washington, DC: National Center for Education Statistics, Institute of Education Sciences, U.S. Department of Education.
- Long, S., & Flexer, C. (2001). Sound field amplification for all. *Advance for Speech-Language Pathologists and Audiologists*, 11(27), 10-11.
- Lou, Y., Abrami, P. C., & Spence, J. C. (2000). Effects of within-class grouping on student achievement: An exploratory model. *The Journal of Educational Research*, 94(2), 101.
- Loven, F., Fisk, K., & Johnson, S. (2003). *Classroom Amplification Systems on Early Academic Achievement and Attention*. Poster session presentation at the American Speech-Language-Hearing Association Annual Convention, Chicago, IL.
- Maeroff, G. I. (2006). *Building blocks: making children successful in the early years of school*. New York: Palgrave Macmillan.
- Maxwell, K. L., McWilliam, R. A., Hemmeter, M. L., Ault, M. J., & Schuster, J. (2001). Predictors of developmentally appropriate practices in kindergarten through third grade. *Early Childhood Research Quarterly*, 16, 431-452.
- Mendel, L., Roberts, R., & Walton, J. (2003). Speech perception benefits from sound field FM amplification. *American Journal of Audiology*, 12, 114-124.
- Moore, R. C. & Wong, H. H. (1997). *Natural Learning: The Life of an Environmental Schoolyard. Creating Environments for Rediscovering Nature's Way of Teaching*. Berkeley, CA: MIG Communications.
- National Association for the Education of Young Children. (1997). *Developmentally appropriate practice in early childhood programs serving children from birth through age 8: A position statement of the National Association for the Education of Young Children*. Washington, DC: Author.
- National Association for the Education of Young Children. (2005). *NAEYC early childhood program standards and accreditation criteria: The mark of quality in early childhood education*. Washington, DC: National Association for the Education of Young Children.
- National Association for the Education of Young Children & National Association of Early Childhood Specialists in State Departments of Education. (2003). *Early childhood curriculum, assessment, and program evaluation: Building an effective, accountable system in programs for children birth through age 8*. Washington DC: Author.

- National Association of Early Childhood Specialists in State Departments of Education. (2000). Still unacceptable trends in kindergarten entry and placement. Position statement. Chicago: Author.
- National Association of State Boards of Education. (1988). Right from the start: The report of the NASBE task force on early childhood education. Alexandria, VA: Author.
- National Center for Education Statistics. (2001). Education achievement and Black-White inequality. Washington, D. C.: Department of Education.
- National Education Association. (2003, July 4). News release: NEA delegates call for universal pre-kindergarten and full day kindergarten. Retrieved October 20, 2004, from <http://www.nea.org/newsreleases/2003/nr030704b.html>
- National Education Goals Panel. (1998). Ready Schools: A report of the Goal 1 Ready Schools Resource Group. Washington, DC: Author.
- New, R.S. (1998). Theory and praxis in Reggio Emilia: They know what they are doing, and why. In C. Edwards, L. Gandini, & G. Forman (Eds.), *The hundred languages of children: The Reggio Emilia approach – advanced reflections* (2nd ed., pp. 261-284). Greenwich, CT: Ablex Publishing Company.
- New, R. S. (2000). Reggio Emilia: An approach or an attitude? In J.L. Roopnarine & J.E. Johnson (Eds.), *Approaches to early childhood education*, (3rd ed., pp. 313-335). Upper Saddle River, NJ: Merrill Prentice Hall.
- Newcombe, N., and Huttenlocher, J. (2000). *Making Space: The Development of Spatial Representation and Reasoning*. Cambridge MA: Massachusetts Institute of Technology Press.
- NICHD Early Child Care Research Network. (1999). Child outcomes when childcare center classes meet recommended standards for quality. *American Journal of Public Health*, 89(7), 1072-1077.
- Olds, A. (1988). Places of beauty. In D. Bergen (Ed.), *Play as a medium for learning and development*, (pp. 181-186). Portsmouth, NH: Heinemann.
- Orange County Partnership for Children. (2006). Healthy Kids Campaign (website). Retrieved on November 27, 2007 from: <http://www.orangesmartstart.org/page.php?mode=privateview&pageID=52>
- Peisner-Feinberg, E., Burchinal, M., Clifford, R., Culkin, M., Howes, C., Kagan, S.L., & Yazejian, N. (2001). The relation of preschool child care quality to children's cognitive and social trajectories through second grade. *Child Development*, 72, 1534-1579.
- Phillips, C. B., & Bredekamp, S. (1998). Reconsidering early childhood education in the United States: Reflections from our encounters with Reggio Emilia. In C Edwards, L. Gandini & G. Forman (Eds.), *The hundred languages of children: The Reggio Emilia Approach – advanced reflections* (2nd ed., pp 439-466). Greenwich, CT: Ablex Publishing Company.
- Phillips, D.A., McCartney, K., & Scarr, S. (1987). Child care quality and children's social development. *Developmental Psychology*, 23(4), 537-543.
- Piaget, J. (1952). *The origins of intelligence in children*. New York: International Universities Press.
- Piaget, J. (1962). *Play, dreams, and imitation in childhood*. New York: Norton. (Original work published 1945).
- Pianta, R. C. (2003). Standardized classroom observations from pre-k to third grade: A mechanism for improving quality classroom experiences during the P-3 years. New York: Foundation for Child Development.
- Pianta, R.C., & Harbers, K. (1996). Observing mother and child behavior in a problem solving situation at school entry: Relations with academic achievement. *Journal of School Psychology*, 34, 307-22.
- Pianta, R.C. & Walsh, D.J. (1996). *High risk children in schools: Creating sustaining relationships*. New York: Routledge.
- Reynolds, A. J., Temple, J. A., Robertson, D. L., & Mann, E. A. (2002). Age 21 cost-benefit analysis of the Title I Chicago Child-Parent Centers. *Educational Evaluation and Policy Analysis*, 24(4), 267-303.
- Riegle-Crumb, C. (2006). The path through math: Course sequences and academic performance at the intersection of race-ethnicity and gender. *American Journal of Education*, 113, 101-122.
- Sanoff, H. (1994). *School Design*. New York: John Wiley.
- Schwartz, I. S., Sandall, S. R., Odom, S. L., Horn, E., & Beckman, P. (2001). I know it when I see it": In search of a common definition of inclusion. In S. Odom (Ed.), *Widening the circle: Including children with disabilities in preschool programs* (pp. 10-24). New York: Teachers College Press.
- Schweinhart, L. J., Barnes, H. V., & Weikart, D. P. (1993). Significant benefits: The High/Scope Perry Preschool study through age 27. Monographs of the High/Scope Educational Research Foundation, 10. Ypsilanti, MI: High/Scope Press.

- Scott-Little, C., Kagan, S.L., & Frelow, V.S. (2005). Inside the content: The depth and breadth of early learning standards. University of North Carolina at Greensboro: SERVE Center for Continuous Improvement.
- Shin, H.B. (2005). School enrollment: Social and economic characteristics of students: October 2003. Current Population Reports, P20-554. Washington, DC: US Census Bureau.
- Siraj-Blatchford, Sylva, Muttock, Gilden, & Bell, 2002
- Slavin, R., Karweit, N., & Madden, N. (Eds.). (1989). Effective programs for students at risk. Boston: Allyn & Bacon.
- Stoecklin, V. (1999). Designing for all children. Kansas City, MO: White-Hutchinson Leisure and Learning Group. Retrieved March 9, 2007, from <http://www.whitehutchinson.com/children/articles/designforall.shtml>
- Sussman, C. & Gillman, A. (2007). Building Early Childhood Facilities. (Preschool Policy Brief, Issue No. 14). New Brunswick, NJ: National Institute for Early Education Research, Rutgers University. <http://nieer.org/resources/policybriefs/14.pdf>
- Tegano, D., Moran, J., DeLong, A., Brickley, J., & Ramassini, K. (1996). Designing classroom spaces: Making the most of time. Early Childhood Education Journal, 23(3), 35-41.
- The Twenty-first Century Foundation. (2005). Community Returns: Investing in Black men and boys. New York, NY: Author.
- US Green Building Council. Leadership in Energy and Environmental Design (LEED) Green Building Rating System. Retrieved March 9, 2007, from <http://www.usgbc.org/DisplayPage.aspx?CategoryID=19>
- Vatsky, S. (2007, August-September). Looking and learning: The Solomon R. guggenheim Museum, Frank Lloyd Wright. SchoolArts: The Art Education Magazine for Teachers, 107(1), 33-34.
- Vygotsky, L. (1986). Thought and language. Cambridge MA: Massachusetts Institute of Technology Press.
- Wells, N.M. (2000). At home with nature: Effects of 'greenness'; on children's cognitive development. Environment and Behavior, 32(6), 775-95.
- Wesley, P.W., & Buysse, V. (2001). Communities of practice: Expanding professional roles to promote reflection and shared inquiry. Topics in Early Childhood Special Education, 21(2), 114-123.
- White, R., & Stoecklin, V. (1997). Children's Outdoor Play & Learning Environments; Returning to Nature. Kansas City, MO: White Hutchinson Leisure & Learning Group.
- Whitebook, M., Howes, C., & Phillips, D. (1990). Who cares? Childcare teachers and the quality of care in America. Final report of the National Child Care Staffing Study. Washington, DC: National Center for the Child Care Workforce.
- Wolff, S. (2002). Design features for project-based learning. Retrieved March 9, 2007, from <http://www.designshare.com/index.php/articles/design-project-based-learning/>
- World Health Organization. (2004). The Physical School Environment: An Essential Component of a Health-Promoting School. (Information Series on School Health Document 2). Geneva, Switzerland: Author.
- Worth, K., & Grollman, S. (2003). Worms, shadows and whirlpools: Science in early childhood classrooms. Newton, MA: Education Development Center.





**First School**  
UNITING THE BEST OF EARLY CHILDHOOD,  
ELEMENTARY, AND SPECIAL EDUCATION



Perkins Eastman